

Disano Home

2026



48V

FOSNOVA 48V

The new Fosnova 48V DC spotlights mounted on low voltage Omnitrack MICRO systems make up the perfect lighting solution in settings where accent lighting with very low energy consumption must also reinforce the style and aesthetics of the room.

48V - SPOTLIGHTS



FOCUS SLIM Q 5.0 - 48V

LENGTH
160 mm

WIDTH
70 mm

14 W 3000 / 4000 K



FOCUS SLIM Q7 - 48V

LENGTH
160 mm

WIDTH
100 mm

19 W 3000 / 4000 K



MATRIX C MINI - 48V

LENGTH
160 mm

WIDTH
45 mm

4 W 3000 K



MATRIX C MINI - 48V

LENGTH
160 mm

WIDTH
65 mm

8 W 3000 K



FOCUS SLIM T 5.0 - 48V

LENGTH
160 mm

Ø 78 mm

14 W 3000 / 4000 K



FOCUS SLIM T 7.0 - 48V

LENGTH
166 mm

Ø 108 mm

19 W 3000 / 4000 K

48V - SPOTLIGHTS



ASO A MINI T - 48V

LENGTH
160 mm
Ø 35 mm
8 W 3000 K



ASO A MICRO T - 48V

LENGTH
160 mm
Ø 25 mm
4 W 3000 K



ASO A MICRO T SHAPER - 48V

LENGTH
160 mm
Ø 34 mm
5 W 3000 K
BEAM ANGLE 0° ÷ 55°



ASO A MINI T FIXED - 48V

LENGTH
160 mm
HEIGHT
49 / 65 mm
Ø 32 / 45 mm
5 / 9 W 3000 K



ASO A STILO - 48V

HEIGHT
200 mm / 300 mm / 400 mm
Ø 30 mm
3 / 5 / 7 W 3000 K



ASO B SMALL T - 48V

LENGTH
160 mm
HEIGHT
65 mm
Ø 45 mm
8 W 3000 K

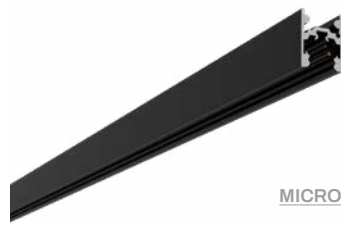




48V - TRACK RAILS



MICRO P TRACK - 48V



MICRO H TRACK - 48V



MICRO T TRACK - 48V



MICRO R TRACK - 48V

48V - LIGHT MODULES



MODULE UGR
FOR MICRO TRACK



OPALE MODULE
FOR MICRO TRACK - XL



LISET 2.0 MINI OVAL
ROTATABLE

LENGTH
231 / 345 mm

8 / 12 W 3000 K



LISET 2.0 MINI - OR

LENGTH
390 mm

8 W 3000 K



HONEY

The Honey range of recessed and ceiling lighting fixtures was developed to meet the most sophisticated demands of contemporary architectural design. With its geometric precision optics and wide selection of refined finishes, Honey offers the perfect balance of advanced lighting technology and bespoke aesthetics. Each luminaire is designed for seamless integration across a variety of settings (retail, commercial, public, cultural, and more), providing fully customisable solutions in terms of light output, shape, and colour. The geometric optics deliver controlled, flexible light distribution, while the versatile colour options offer full creative freedom, highlighting surrounding materials and architectural elements. The main feature of this fixture is its “CCT Switch” technology: thanks to the integrated selector located on the body, it is possible to choose the preferred color temperature (3000 / 4000 / 5700 K), allowing the luminaire to adapt to the majority of installation requirements.



Ø 94 mm
10 W 2700 / 3000 / 4000 K



Ø 94 mm
10 W 2700 / 3000 / 4000 K



Ø 139 mm
14 W 2700 / 3000 / 4000 K



Ø 139 mm
14 W 2700 / 3000 / 4000 K



Ø 159 mm
20 W 2700 / 3000 / 4000 K



Ø 159 mm
20 W 22700 / 3000 / 4000 K



Ø 189 mm
23 W 2700 / 3000 / 4000 K



Ø 189 mm
23 W 2700 / 3000 / 4000 K



HECTO / BUTTON

Hecto is a wall sconce that provides a wide range of lighting effects by adjusting the fins to the desired light beam angle from 30° to 120°. Its high degree of protection (IP65) makes it ideal for indoor and outdoor lighting applications.

Button is a wall sconce featuring an elegant and contemporary design, perfect for seamlessly integrating into any architectural setting. Its bright and uniform light distribution, combined with a high protection rating (IP65), makes it ideal for both indoor and outdoor lighting applications.

The main feature of this fixture is its “CCT Switch” technology: thanks to the integrated selector located on the body, it is possible to choose the preferred color temperature (3000K–4000K–5700K), allowing the luminaire to adapt to the majority of installation requirements.



HECTO

LENGTH
120 mm

WIDTH
98 mm

HEIGHT
100 mm

10 W 3000 K



BUTTON

Ø 160 mm
Ø 250 mm

WIDTH
50 mm

8 W / 15 W 3000 / 4000 / 5700 K







ARQ

The range of Arq recessed LED spotlights are the perfect solution for installations that are designed to hide their physical presence once fitted. These spotlights are shaped to blend perfectly into the false ceilings where they are fitted. Moreover they can be easily installed in any type of space, to create amazing light effects.



ARQ A
 HEIGHT
 59 mm
 Ø 64 mm
 5 W 3000 K



ARQ A 2X
 LENGTH
 175 mm
 WIDTH
 80 mm
 HEIGHT
 102 mm
 10 W 3000 K



ARQ B
 HEIGHT
 80 mm
 Ø 64 mm
 5 W 3000 K



ARQ B ZOOM
 HEIGHT
 70 mm
 Ø 65 mm
 5 W 3000 K



ARQ B 2X
 LENGTH
 125 mm
 WIDTH
 60 mm
 HEIGHT
 79 mm
 10 W 3000 K



ARQ B 3X
 HEIGHT
 94 mm
 Ø 130 mm
 15 W 3000 K



ARQ C
 HEIGHT
 50 mm
 Ø 61 mm
 5 W 3000 K



ARQ D
 HEIGHT
 90 mm
 Ø 55 mm
 5 W 3000 K

M SERIES

This series of compact recessed LED spotlights is designed for accent lighting in modern, refined interiors. With their minimalist, easy-to-install design, these spotlights are perfectly suited to smaller spaces, delivering bright, focused lighting without compromising the aesthetic harmony of the environment. Ideal for highlighting architectural features, artworks, or specific areas within a room, they provide precise, directional lighting with extraordinary energy efficiency. Advanced LED technology ensures a long lifespan and low power consumption, offering both environmental and economic advantages.



M40 A

Ø 40 mm

3 W 3000 K



M40 B

Ø 40 mm

3 W 3000 K



M40 C

Ø 40 mm

3 W 3000 K



M42

Ø 42 mm

3 W 3000 K



M44 A

Ø 44 mm

3 W 3000 K



M44 B

Ø 44 mm

3 W 3000 K



M65 A

Ø 65 mm

10 W 3000 K



M65 B

Ø 65 mm

10 W 3000 K



M65 C

Ø 65 mm

10 W 3000 K



Q65 A

LENGTH
65 mm

WIDTH
65 mm

10 W 3000 K



Q65 B

LENGTH
65 mm

WIDTH
65 mm

10 W 3000 K

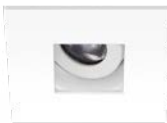


Q65 C

LENGTH
65 mm

WIDTH
65 mm

10 W 3000 K

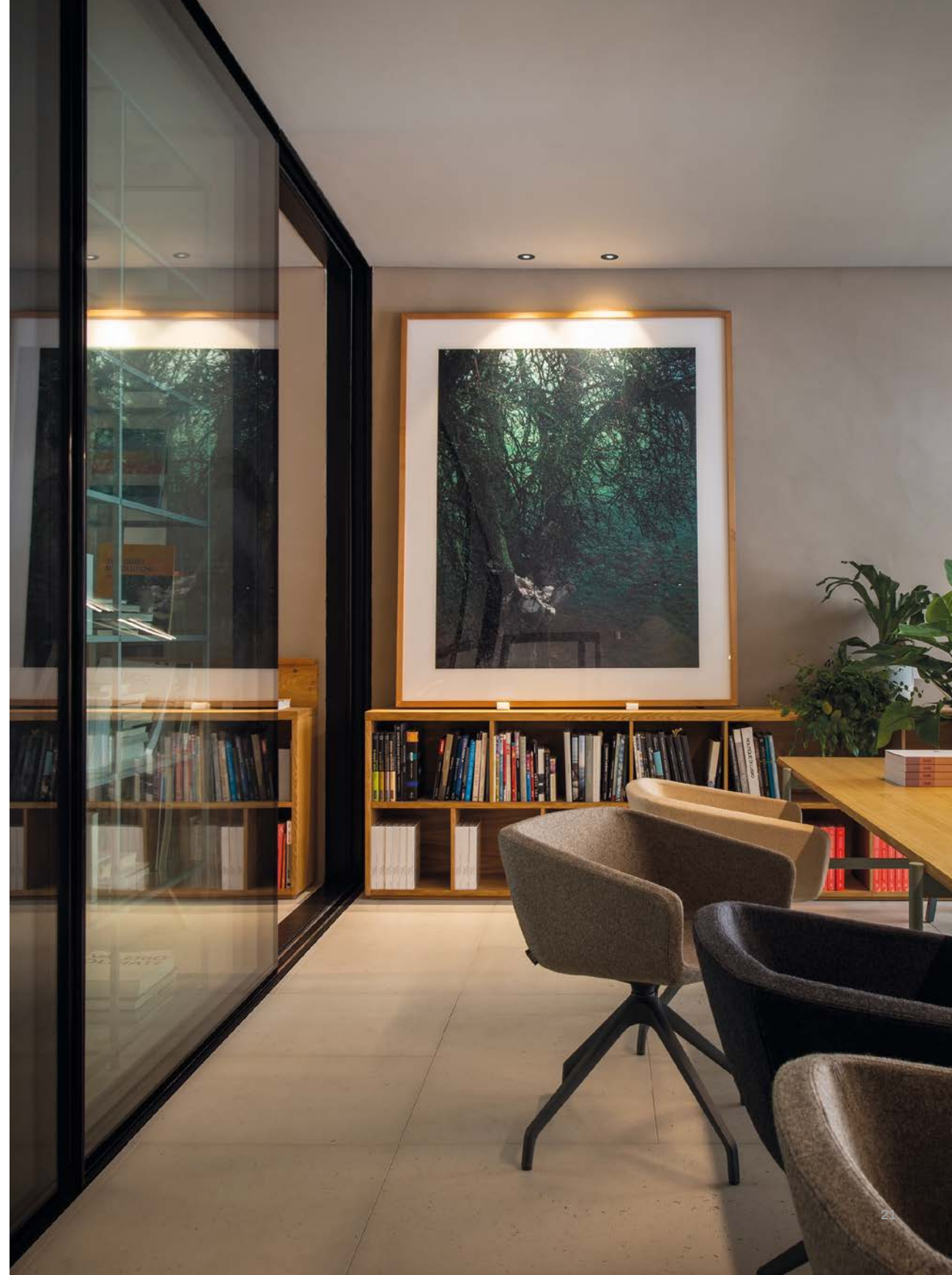


Q65 D

LENGTH
65 mm

WIDTH
65 mm

10 W 3000 K







ISPOT

Ispot represents the technological evolution of the recessed spotlight, ideal for replacing existing spotlights. The main advantages of this state-of-the-art product are energy savings, great flexibility of use and superior lighting quality.

With the latest generation of LEDs, it is possible to achieve energy savings of up to 80% compared to older products, plus a long service life and excellent light flux maintenance. CCT and POWER switch versions, the range includes luminaires in various wattages, allowing for tailored solutions to suit any installation site. The innovative CCT switch technology revolutionises lighting design by enabling easy adjustment of power and colour temperature. This flexibility ensures that the perfect light can be achieved for every project with minimal effort.



ISPOT HOTEL 1

Ø 90 mm

10 W

2700 / 3000 / 4000 K



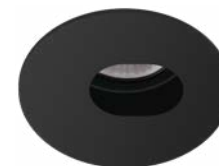
ISPOT HOTEL 2

LENGTH
90 mm

WIDTH
90 mm

10 W

2700 / 3000 / 4000 K



ISPOT HOTEL 3

Ø 90 mm

10 W

2700 / 3000 / 4000 K



ISPOT HOTEL 4

Ø 90 mm

10 W

2700 / 3000 / 4000 K



ISPOT COMFORT MINI

Ø 35 mm

3 W 3000 K



ISPOT COMFORT 1

Ø 70 mm

8 W

2700 / 3000 / 4000 K



ISPOT COMFORT 2

Ø 82 mm

8 W

2700 / 3000 / 4000 K



ISPOT COMFORT 3

Ø 92 mm

8 W

2700 / 3000 / 4000 K



ISPOT COMFORT 4

Ø 108 mm

8 W

2700 / 3000 / 4000 K



ISPOT COMFORT 5

Ø 82 mm

8 W

2700 / 3000 / 4000 K



LUNA

Luna is more than just a lamp: it is a furnishing element that lights up spaces with delicacy and character. Its circular, essential, and harmonious shape recalls the perfection of the full moon, bringing a warm, enveloping, and timeless atmosphere to interior spaces. Designed for modern and refined environments, Luna emits a soft, even light that enhances any space without glare, UGR<19. Its clean, well-balanced design blends naturally into living rooms, bedrooms, studies, and contract settings, becoming a discreet yet distinctive focal point.

Thanks to its minimalist style and strong aesthetic identity, Luna combines functionality and poetry: it illuminates, furnishes, and creates emotion. It is the ideal choice for those seeking a light that is not only technical, but also an expression of style and well-being.

Available in CCT and POWER switch versions, the range includes fixtures in different sizes and power outputs, making it easy to find the most suitable solution for any installation requirement. Power and color adjustment via the CCT switch is a truly innovative technology that allows users to easily select different color temperatures. In this way, the perfect light is delivered for every lighting project, simply and effectively. By selecting the LED power and color according to specific needs, optimal design conditions are always guaranteed.



Ø 300 mm
12 / 19 W
3000 / 4000 / 5700 K



Ø 500 mm
28 / 40 W
3000 / 4000 / 5700 K



Ø 600 mm
42 / 60 W
3000 / 4000 / 5700 K



Ø 800 mm
56 / 80 W
3000 / 4000 / 5700 K





CIRCULAR

The product itself features clean, flowing lines and a regular structure, easily creating clean and pure geometric shapes (such as perfect circles and ovals). This 'less is more' design philosophy perfectly complements various interior design styles, including modern, minimalist, understated luxury, and industrial, and can quickly enhance the texture of a space. High-quality profile rings can be seamlessly spliced using specialized gussets and precise cutting to form complete, smooth rings with no obvious traces at the joints, appearing as if molded from a single piece, presenting a high-end visual effect.



WIDTH
70 mm
Ø 600 mm
50 W
3000 / 4000 K



WIDTH
70 mm
Ø 900 mm
80 W
3000 / 4000 K



WIDTH
70 mm
Ø 1200 mm
110 W
3000 / 4000 K



WIDTH
70 mm
Ø 1500 mm
130 W
3000 / 4000 K





LISET 2.0

Liset 2.0 is the most up-to-date version of a highly successful linear LED fixture, distinguished by the quality of its materials and the most advanced optical technology. High-quality office lighting improves working conditions and boosts productivity. The dark-light optics of Liset 2.0 protect eye health, while the high color rendering enhances visual comfort and improves mood.

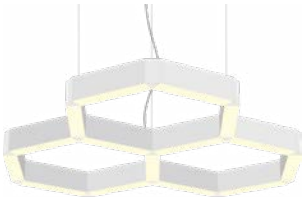
The value of the building increases and the company's image is enhanced through eco-friendly solutions that reduce energy consumption. The Liset family includes over 40 versions, allowing the creation of lighting designs that are perfectly tailored to the use of spaces (workstations, meeting rooms, collaboration areas) while achieving the most convincing aesthetic result.

Liset 2.0 can be installed by combining different modules with various optics to obtain differentiated lighting effects. A wide range of solutions, including customized options, is available to meet every functional and design requirement.

Available in black or white, with various optical options, and as a surface-mounted / recessed or suspended installation.



LENGTH
1500 mm
FROM 36 W TO 50 W
3000 / 4000 K



LENGTH
FROM 600 TO 2100 mm
FROM 25 W TO 40 W
3000 / 4000 K



LENGTH
1500 mm
FROM 36 W TO 50 W
3000 / 4000 K



LENGTH
FROM 600 TO 2100 mm
FROM 25 W TO 50 W
3000 / 4000 K



LENGTH
1500 mm
FROM 36 W TO 50 W
3000 / 4000 K



LENGTH
600 mm
25 W
3000 / 4000 K



KOALA MINI

Koala Mini is the contemporary evolution of a great Disano classic. An outdoor spotlight born from a long tradition of reliability and performance, now reinterpreted with an updated design and technology developed for architectural and landscape lighting.

Designed to offer maximum flexibility, Koala Mini adapts to different installation solutions: ground-mounted, wall-mounted, or pole-mounted. This versatility makes it ideal for enhancing specific elements of the outdoor environment — such as trees, plants, façades, and architectural details — or for creating evocative lighting scenes in gardens, parks, and urban spaces.

Robust, reliable, and carefully detailed, Koala Mini combines precise lighting performance with a sober, modern aesthetic that blends discreetly into any outdoor context. Light thus becomes a design tool, capable of shaping spaces and creating atmosphere, while maintaining the solidity that has always distinguished Disano products.



HEIGHT
115 MM

Ø 65 mm

FROM 5 W TO 10 W

3000 / 4000 K



KOALA
ON WALL



KOALA
WITH A PICKET



KOALA
ON A COLUMN
WITH A PICKET



PORTOFINO

Portofino: pleasant aesthetics with maximum functionality touch of prestige for any residential setting, with the most energy-efficient lighting technologies. Portofino is a bollard for driveways, parks and pedestrian walkways. Produced in different wall-mounted versions, heights (300 and 600 mm) and diameters, it also features a version with a flat diffuser and 3 versions with a domed diffuser, this bollard is the right solution for any lighting project. The latest generation of high-efficiency LED sources, with a colour temperature of 3000 / 4000 K and a high colour rendering index, ensure a long lifespan. Portofino also stands out for the high quality materials, with a die-cast aluminum body and column with cooling fins, IP65 protection rating, and a shatterproof and self-extinguishing polycarbonate diffuser. It comes with a connector for connection to the power line and the base plate for wall installation.



LENGTH
145 mm

WIDTH
145 mm

HEIGHT
600 mm

10 W 4000 K



LENGTH
145 mm

WIDTH
145 mm

HEIGHT
300 mm

10 W 4000 K





PATHWAY

Pathway is a compact recessed LED fixture designed to integrate discreetly into both walls and floors. Its extremely small dimensions make it the ideal solution where space is limited, yet the lighting effect must remain precise, elegant, and effective. Designed as a step light, Pathway guides the way with soft, uniform illumination, enhancing safety without causing glare. It is particularly suitable for corridors, staircases, outdoor walkways, entrances, and transit areas where visibility must be consistent and reliable. Its controlled light distribution enhances architectural surfaces and volumes, contributing to welcoming and functional atmospheres. Thanks to high-efficiency LED technology, Pathway ensures low energy consumption and long operational life, minimizing maintenance requirements and operating costs. The recessed installation allows seamless integration into materials, leaving only the light visible for a clean and contemporary result. Ideal for residential, commercial, and hospitality applications, Pathway combines functionality and design in a compact yet distinctive product, capable of defining pathways, highlighting level changes, and creating refined lighting accents in any environment.



PATHWAY Q
 LENGTH 40 mm
 WIDTH 40 mm
 HEIGHT 48 mm
 3 W 3000 / 4000 K



PATHWAY Q1
 LENGTH 50 mm
 WIDTH 50 mm
 HEIGHT 28 mm
 3 W 3000 / 4000 K



PATHWAY R
 HEIGHT 48 mm
 Ø 40 mm
 3 W 3000 / 4000 K



PATHWAY R1
 HEIGHT 28 mm
 Ø 50 mm
 3 W 3000 / 4000 K



PATHWAY B1
 HEIGHT 60 mm
 Ø 60 mm
 2 W 3000 K



PATHWAY B2
 HEIGHT 60 mm
 Ø 60 mm
 2 W 3000 K



PATHWAY C1
 HEIGHT 13 mm
 Ø 70 mm
 0.4 W 3000 K



PATHWAY C2
 HEIGHT 13 mm
 Ø 70 mm
 0.9 W 3000 K



PATHWAY C3
 HEIGHT 13 mm
 Ø 70 mm
 1 W 3000 K

POCKET

POCKET SMALL

Pocket, the multi-format LED step light, is the perfect solution for illuminating pathways, stairs, driveways, and corridors, both indoors and outdoors. Thanks to its availability in various shapes and sizes, it perfectly adapts to any design and functional requirement.

POCKET

Pocket LED is a residential step light designed for both indoor and outdoor use. Available in round and square designs, these lights effortlessly combine high aesthetic appeal with exceptional functionality and are offered in both recessed and wall-mounted versions. They also deliver excellent lighting performance, thanks to advanced LED sources and premium-quality materials that ensure durability and a long service life. With their minimalist design, these technologically advanced step lights not only illuminate evening pathways but also serve as elegant decorative elements, enhancing every access point and transit route.



POCKET 1
RECESSED

LENGTH
136 mm

WIDTH
78 mm

HEIGHT
136 mm

5 W 3000K



POCKET 2
RECESSED

LENGTH
136 mm

WIDTH
78 mm

HEIGHT
202 mm

5 W 3000K



POCKET 4
RECESSED

LENGTH
250 mm

WIDTH
37 mm

HEIGHT
114 mm

10 W 3000K



POCKET 5 ROUND
RECESSED

WIDTH
40 mm

Ø 114 mm

5 W 3000K



POCKET 5 ROUND
RECESSED

WIDTH
78 mm

Ø 135 mm

5 W 3000K



POCKET 6 ROUND
RECESSED

WIDTH
78 mm

Ø 202 mm

8 W 3000K



POCKET SMALL
WALL

LENGTH
120 mm

WIDTH
36 mm

HEIGHT
120 mm

6 W 3000 / 4000 K




POCKET 6 ROUND
WALL

WIDTH
37 mm

Ø 180 mm

8 W 3000K





In domestic settings, hotels, light guides and reveals, connecting people, architecture, and materials. The range includes solutions for both indoor and outdoor spaces; the outdoor proposals echo the elegance and technical precision of the indoor fixtures, leaving room for what is illuminated. It is a flexible light, capable of adapting to different design and living needs.

Art direction
Mauro Merlini with Noa Merlini, Agnese Pozzobon, Martina Valente

All images are simulated images of product installation
© Disano 2026

www.disano.it

 **Fosnova**

disano ●
illuminazione